

WesternBright™ ECL

Chemiluminescent HRP Substrate

For Catalog Numbers

K-12045-C20	20 ml, sufficient for 200 cm ²
K-12045-D20	200 ml, sufficient for 2000 cm ²
K-12045-D50	500 ml, sufficient for 5000 cm ²

Advansta Corporation

2140 Bering Drive | San Jose, CA 95131

Tel: 650.325.1980 | Fax: 650.325.1904 | Email: sales@advansta.com

Product information: www.advansta.com/products/WesternBright_ECL



Important Information

The following instructions are for use with the WesternBright ECL enhanced chemiluminescent substrate kit, catalog numbers K-12045-C20, K-12045-D20 and K-12045-D50. Please see the Kit Contents section for details.

Storage Information

The WesternBright ECL reagents are stable at room temperature for at least one year. Reagents do NOT require refrigeration. Storing reagents refrigerated may DECREASE shelf life. For more information, see the Shipping and Storage Conditions section on page 4.

Warnings and Precautions:

- WesternBright ECL is for research use only.
- Always wear gloves when handling membranes and reagents.
- Refer to MSDS for additional safety information.
- The product is guaranteed to be free of manufacturer defect, and to function as described when the enclosed protocol is followed by properly trained personnel. Please see the Warranty section for more information.

Table of Contents

Section	Page
1. Kit Contents	3
2. Shipping and Storage Conditions	4
3. Additional Materials Required	4
4. Background	5
5. Western Blotting	5
6. Overview of the Protocol for Chemiluminescent Western Blots	7
7. Quick Protocol	8
8. Detailed Protocol	9
9. Troubleshooting and FAQ	12
10. References	13
11. Related Products	13
12. Warranty	14
13. User Notes	14



1. Kit Contents

Catalog Number: K-12045-C20

WesternBright™ ECL Chemiluminescent HRP Substrate, Trial size, sufficient for 200 cm² of membrane surface.

Item	Description	Quantity
R-03031-C10	WesternBright™ ECL Luminol/enhancer solution	10 ml
R-03025-C10	WesternBright™ Peroxide Chemiluminescent Detection Reagent	10 ml

Catalog Number: K-12045-D20

WesternBright™ ECL Chemiluminescent HRP Substrate, sufficient for 2000 cm² of membrane surface.

Item	Description	Quantity
R-03031-D10	WesternBright™ ECL Chemiluminescent Luminol/enhancer solution	100 ml
R-03025-D10	WesternBright™ Peroxide Chemiluminescent Detection Reagent	100 ml

Catalog Number: K-12045-D50

WesternBright™ ECL Chemiluminescent HRP Substrate, sufficient for 5000 cm² of membrane surface.

Item	Description	Quantity
R-03031-D25	WesternBright™ ECL Luminol/enhancer solution	250 ml
R-03025-D25	WesternBright™ Peroxide Chemiluminescent Detection Reagent	250 ml

2. Shipping and Storage Conditions

Product may be shipped at any ambient temperature. No extra temperature control or insulation is required. All shipping methods (ground and express) are acceptable.

The WesternBright ECL reagents are stable at room temperature for at least one year. Reagents do NOT require refrigeration. Storing reagents refrigerated between applications may DECREASE shelf life. If the reagents were delivered refrigerated due to shipping conditions, leave them unopened at room temperature for at least 24 hours and then shake before the first opening. Accidental freezing during shipping does not significantly affect the performance if the reagents remained unopened for at least 24 hours after thawing and warming up to room temperature. Shake reagents well several times after thawing and during warming up period before the first opening.

3. Additional Materials Required

- Electrophoresis apparatus and buffers for SDS-PAGE
- Tank and buffers for electrophoretic transfer of proteins from gel to membrane
- Nitrocellulose or PVDF membrane, cut to size of gel. All membrane products available from Advansta (see the Related Products section) are compatible with WesternBright ECL.
- Washing buffer (PBS-T or TBS-T). For best results, use AdvanWash washing solution (see the Related Products section)
- Blocking buffer
- Primary antibody compatible with your application
- Secondary antibody, conjugated to Horseradish peroxidase (HRP) corresponding to your primary antibody (see the Related Products section)
- Film and film-developing system (see the Related Products section)



4. Background

WesternBright ECL is a Horseradish peroxidase (HRP) substrate specially developed for film imaging. WesternBright ECL produces a strong signal for high sensitivity with short exposure times. Additionally, the signal from WesternBright ECL is long-lasting, so the blot can be re-imaged without loss of information.

5. Western Blotting

Western blotting is a protein analysis tool that has become commonplace in molecular biology and protein chemistry laboratory. The principle of chemiluminescent Western blotting is shown in Figure 1. The general protocol, including the role of WesternBright ECL, can be seen on page 7. Proteins are separated by size via electrophoresis, and then transferred electrophoretically from the gel to a membrane support, usually nitrocellulose or PVDF. This membrane containing the transferred proteins is commonly referred to as a blot. The location of a protein of interest is detected on the blot by applying the primary antibody, which binds to the protein. The primary antibody bound to the blot is then visualized using a secondary antibody that binds to the primary antibody. The secondary antibody is labeled in some way to make it detectable, such as with a radioactive isotope or an enzyme that can be detected by its activity.

Since 1988, enhanced chemiluminescence or ECL (1) has become one of the most common detection methods in Western blotting (2). In this method, the secondary antibody is conjugated to the enzyme Horseradish peroxidase (1,2). Once bound to the membrane, the secondary antibody is detected by incubating the blot with a solution containing an HRP substrate that generates a light-emitting product after reaction with HRP (Figures 1, 2). The chemiluminescent signal can be detected by exposing the blot to X-ray film, or by imaging with a CCD camera.

WesternBright ECL is an enhanced chemiluminescent substrate specially developed for film imaging. WesternBright ECL produces a strong signal with very low background for high sensitivity. Additionally, the WesternBright ECL signal is long lasting, allowing repeated exposures without fear of losing data.

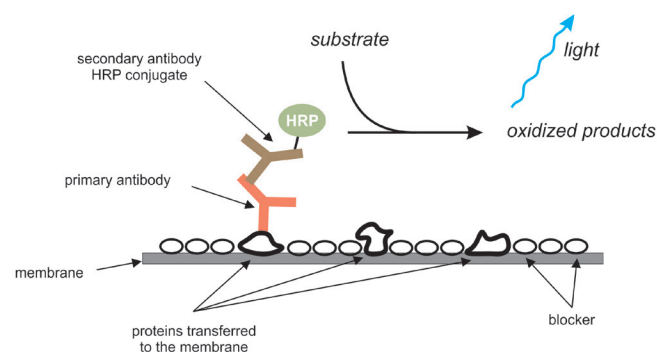


Figure 1. The principle of chemiluminescent Western blotting.

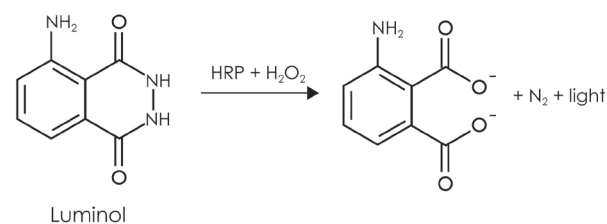
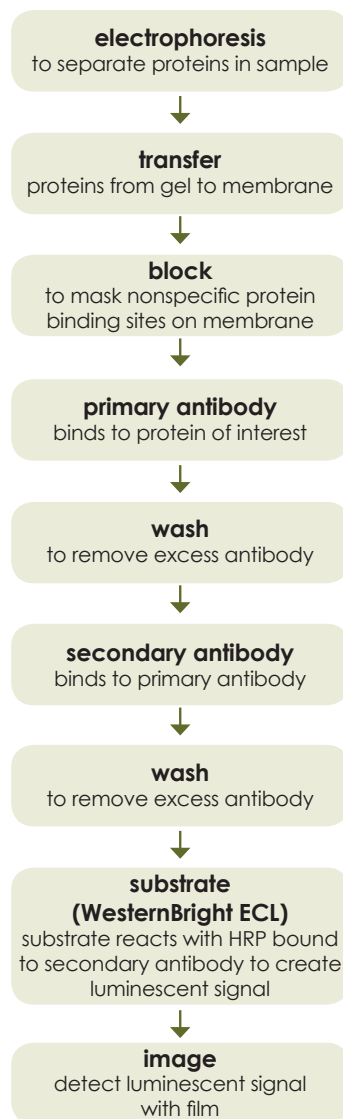


Figure 2. Chemiluminescence of luminol.

6. Overview of the Protocol for Chemiluminescent Western Blots



7. Quick Protocol

For additional information, see the detailed protocol which follows.

Step	User Notes
1. Prepare your protein blot	
2. Block membrane for 1 hour at room temperature (RT)	
3. Incubate blot with primary antibody for one hour at RT with gentle agitation	
4. Wash blot: <ul style="list-style-type: none"> • 1 x quickly • 1 x 15 min, with 0.7 ml/cm² membrane • 3 x 5 min, with at least 0.3 ml/cm² membrane each time 	
5. Incubate blot with secondary antibody for one hour at RT with gentle agitation	
6. Wash blot: <ul style="list-style-type: none"> • 3 x 5 min, with at least 0.3 ml/cm² membrane each time 	
7. Mix WesternBright ECL components 1:1 in sufficient amounts to obtain 0.1 ml/cm ² of your membrane and place on blot for 2 minutes.	
8. Drain excess reagent	
9. Cover damp blot with plastic wrap and image by exposure to X-ray film	

8. Detailed Protocol

Step	Notes
1. Prepare a protein blot 1.1. Separate the protein sample(s) via electrophoresis 1.2. Transfer proteins to membrane <ul style="list-style-type: none"> • Prewet membrane in transfer buffer, and assemble transfer sandwich according to tank manufacturer's instructions. • Dot-blot or slot blots can also be detected with WesternBright ECL. 	<ul style="list-style-type: none"> • Any electrophoresis system and buffer, such as Laemmli, is compatible with WesternBright ECL. • A wet or tank transfer method is preferred, though semi-dry methods should also be compatible. We have found that the buffer system developed by Bolt et al (3) works well. • Both nitrocellulose and PVDF membranes are compatible with WesternBright ECL. • If using PVDF, first wet membrane with a 1 min incubation in 100% MeOH followed by water for ~5 min and then transfer buffer for 5-10 min. • For slot blot applications, nitrocellulose is much more convenient than PVDF because it is more difficult to avoid bubbles with PVDF.
2. Block membrane <ul style="list-style-type: none"> • Incubate the blot in a blocking buffer with gentle agitation for 1 hour at room temperature (RT). Use 0.2 to 0.5 ml of blocking buffer per cm² of blot to provide adequate blocking. 	<ul style="list-style-type: none"> • Blocking masks non-specific protein binding sites on the membrane, reducing background and increasing the specificity of binding of the primary antibody to the protein of interest. • The optimal blocking buffer will depend in part on the nature of the antigen of interest, and on the quality of the primary antibody. Common blocking agents including non-fat dry milk have been found to be compatible with WesternBright ECL. • 10 to 20 ml is usually sufficient for a typical 7 x 9 cm mini-blot.
3. Incubate blot with primary antibody <ul style="list-style-type: none"> • Dilute primary antibody in blocking buffer. • Incubate blot with primary antibody solution for 1 hour at RT with gentle agitation. 	<ul style="list-style-type: none"> • Optimal primary antibody dilutions must be determined empirically. • We recommend primary antibody dilutions from 1:1,000 to 1:50,000. A good initial dilution is 1:5,000. • Antibody can be added to a dish and placed on a shaker, or a smaller volume (5-10 ml) can be used by sealing the blot into a bag and placing it on a rotary platform.

Step	Notes
4. Wash blot to remove excess primary antibody <ul style="list-style-type: none"> • 1 x quickly • 1 x 15 min, with 0.7 ml/cm membrane • 3 x 5 min, with at least 0.3 ml/cm² membrane each time 	<ul style="list-style-type: none"> • For best results, use AdvanWash washing solution (R-03024-D50). PBS-T or TBS-T are also compatible with WesternBright ECL. • We recommend washing or rocking blots in a clean dish on a shaker to provide gentle agitation. • For example, a standard 7x9 membrane requires ~50 ml of washing solution for the 15 min wash and ~20 ml of washing solution for 5 min washes.
5. Incubate blot with secondary antibody <ul style="list-style-type: none"> • Dilute secondary antibody in blocking buffer. • Incubate blot with secondary antibody solution for 1 hour at RT with gentle agitation. 	<ul style="list-style-type: none"> • Optimal secondary antibody dilutions must be determined empirically. • We recommend secondary antibody dilutions of 1:10,000 to 1:100,000. A good initial dilution is 1:20,000. • See also notes for step 3.
6. Wash blot to remove excess secondary antibody <ul style="list-style-type: none"> • 3 x 5 min, with at least 0.3 ml/cm² membrane each time 	<ul style="list-style-type: none"> • See notes for step 4.

continued

8. Detailed Protocol, continued

Step	Notes
7. Incubate blot with WesternBright ECL <ul style="list-style-type: none"> Mix components 1 and 2 in a 1:1 ratio in sufficient amounts to obtain at least 0.1 ml/cm² of the blot and add to the blot. It is better to prepare the working solution just before use. However, mixed reagent is stable for several hours at RT. Allow substrate to react with blot for 2 minutes. 	<ul style="list-style-type: none"> Be careful not to touch or put pressure on the blot as this can result in non-specific background. Use only plastic forceps, not metal; metal forceps damage the blocked surface, creating new adsorption sites. Also, traces of metal may act as a catalyst for non-enzymatic substrate oxidation, resulting in very high background. The minimal amount of working reagent is 0.1 ml/cm². For example, for a 7 x 9 cm blot, this minimal volume is 7x9x0.1=6.3 ml. If using the minimal amount of working reagent, incubation may be done without agitation. Make sure the membrane surface is level so adequate reagent is held by surface tension. Incubation may also be done with gentle agitation in a tray just slightly larger than the membrane. Increase the reagent volume as necessary to ensure the membrane is adequately covered with reagent.
8. Drain excess reagent	<ul style="list-style-type: none"> Remove excess substrate via capillary action by touching a KimWipe® or other absorbent material to the edge of the blot.
9. Image blot <ul style="list-style-type: none"> While blot is damp, cover with transparent plastic wrap and expose blot to film. 	<ul style="list-style-type: none"> We recommend trying three exposures; 30 sec, 2 min, and 5 min. The blot can be imaged and re-imaged for several hours.

9. Troubleshooting & FAQ

Western blotting can require substantial optimization due to the multiple steps involved. The correct amount of protein to load on the gel and the best dilutions of primary and secondary antibodies must be determined empirically. Some common questions are addressed below:

Problem	Possible Solutions
High background	<ul style="list-style-type: none"> Reduce primary antibody concentration by increasing the dilution factor. Try a different blocking buffer. Try a shorter exposure time. Increase washing time.
No or low signal	<ul style="list-style-type: none"> Check that correct primary antibody used. Check that secondary antibody recognizes primary (for example if the primary is a rabbit antibody, that the secondary is goat-anti-rabbit).
White spots within bands	<ul style="list-style-type: none"> Improve transfer, making sure to remove any bubbles between the gel and the membrane.
Speckled background	<ul style="list-style-type: none"> Filter secondary antibody. Filter blocking and washing buffers. Ensure that the laboratory environment is clean, to minimize dust, debris or any other particles that might come in contact with the blot. Cover the dish during incubation or washing steps. Use non-powdered gloves, or switch to a different kind of gloves. We recommend powder-free nitrile gloves or polyethylene gloves.

10. References

1. Thorpe GH, Kricka LJ, Moseley SB, Whitehead TP, Phenols as enhancers of the chemiluminescent horseradish peroxidase-luminol-hydrogen peroxide reaction: application in luminescence-monitored enzyme immunoassays. Clin Chem. 1985 Aug; 31(8): 1335-41.
2. Leong MM, Fox GR., Enhancement of luminol-based immunodot and Western blotting assays by iodophenol. Anal Biochem. 1988 Jul; 172(1): 145-50.
3. Bolt M.W., Mahoney P.A, High-efficiency blotting of proteins of diverse sizes following sodium dodecyl sulfate-polyacrylamide gel electrophoresis. Anal Biochem. 1997 May 1; 247(2): 185-192.

11. Related Products

Catalog Number	Product	Size
L-07014-100	LucentBlue™ X-ray film	100 sheets
R-03024-D50	AdvanWash™ 10x washing solution	500 ml
R-05072-500	Goat-anti-rabbit HRP-conjugate secondary antibody	500 µl
R-05071-500	Goat-anti-mouse HRP-conjugate secondary antibody	500 µl
L-08001-010	Low Fluorescence Western Membrane (PVDF) 7x9 cm	10 sheets
L-08002-010	Nitrocellulose Transfer Membrane 0.45 µm 7x9 cm	10 sheets
L-08003-010	Nitrocellulose Transfer Membrane 0.22 µm 7x9 cm	10 sheets

12. Warranty

This product is warranted to be free of defects of material or workmanship, and to perform as described in the published specifications when stored according to the documentation included with the product, and used according to the accompanying instruction manual by appropriately trained personnel. If the product is found to have a defect upon first use and within 30 days of shipment, the product may be replaced. This warranty extends only to the original purchaser of the product. There is no obligation to replace the product as a result of misuse, improper storage, or negligence of the buyer.

13. User Notes

Copyright©2010-216 Advansta. All rights reserved. WesternBright™, AdvanWash™, LucentBlue™ and the Advansta logo are trademarks of the Company. All other trademarks, service marks and tradenames appearing in this brochure are the property of their respective owners.

